



**REGIONAL SPECIALISED METEOROLOGICAL CENTRE-TROPICAL CYCLONES, NEW DELHI  
TROPICAL WEATHER OUTLOOK**

**DEMS-RSMC SPECIAL TROPICAL CYCLONES NEW DELHI DATED 19.04.2022**

**TROPICAL WEATHER OUTLOOK FOR NORTH INDIAN OCEAN (THE BAY OF BENGAL AND ARABIAN SEA) VALID FOR NEXT 120 HOURS ISSUED AT 0600 UTC OF 19.04.2022 BASED ON 0300 UTC OF 19.04.2022.**

**BAY OF BENGAL:**

YESTERDAY'S CYCLONIC CIRCULATION OVER SOUTHWEST BAY OF BENGAL OFF NORTH TAMILNADU COAST NOW LIES OVER SOUTH TAMILNADU AND NEIGHBOURHOOD. IT EXTENDS BETWEEN 1.5 KM & 3.1 KM ABOVE MEAN SEA LEVEL .

SCATTERED LOW AND MEDIUM CLOUDS WITH EMBEDDED MODERATE TO INTENSE CONVECTION LAY OVER SOUTH BAY OF BENGAL & EAST ANDAMAN SEA. SCATTERED LOW AND MEDIUM CLOUDS WITH EMBEDDED WEAK CONVECTION LAY OVER EXTREME WESTCENTRAL BAY OF BENGAL & WEST ANDAMAN SEA.

**PROBABILITY OF CYCLOGENESIS (FORMATION OF DEPRESSION) DURING NEXT 120 HRS:**

24 HOURS	24-48 HOURS	48-72 HOURS	72-96 HOURS	96-120 HOURS
NIL	NIL	NIL	NIL	NIL

**ARABIAN SEA:**

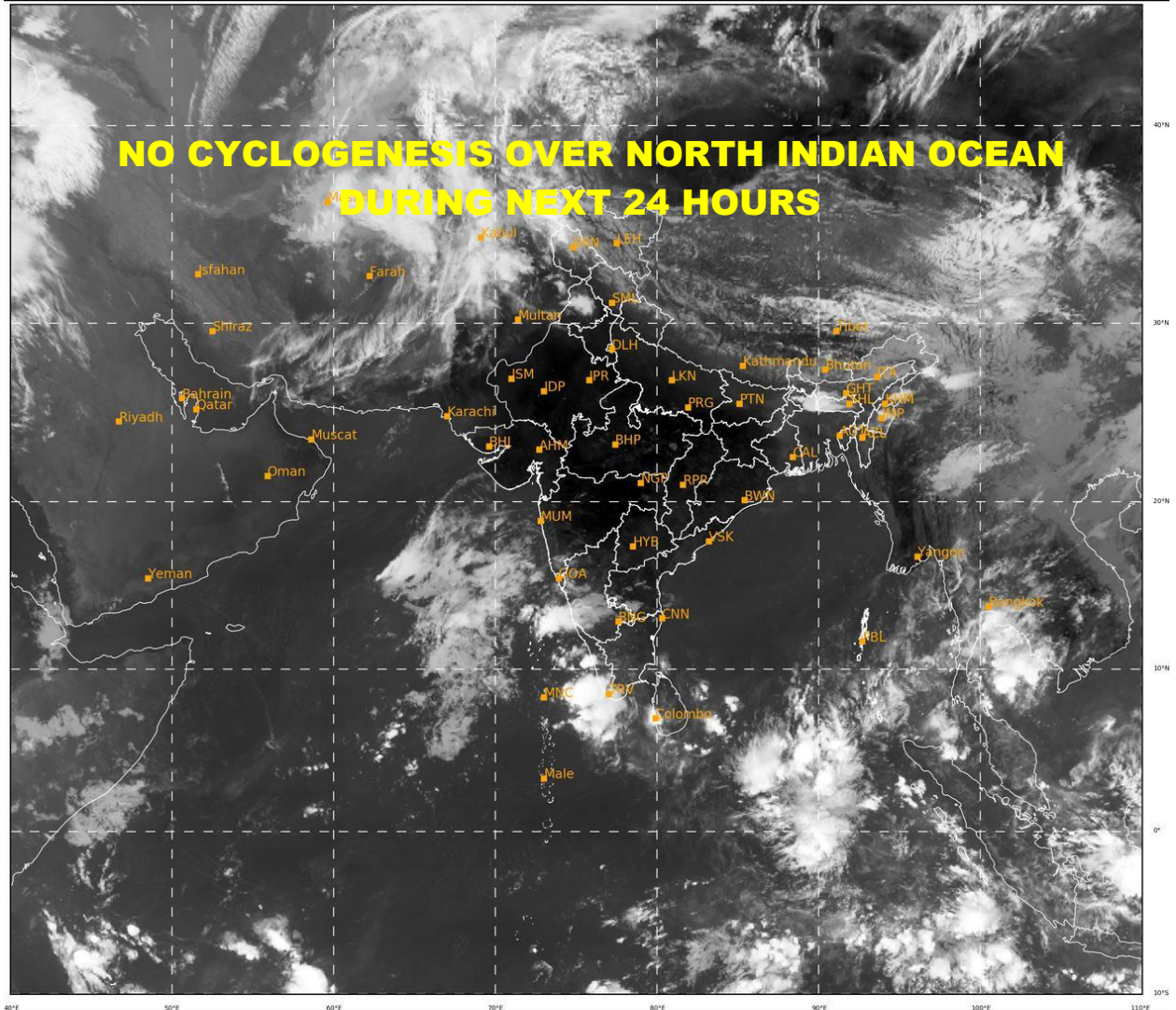
YESTERDAY'S CYCLONIC CIRCULATION OVER CENTRAL PARTS OF SOUTH ARABIAN SEA BECAME LESS MARKED AT 0300 UTC OF TODAY.

SCATTERED LOW AND MEDIUM CLOUDS WITH EMBEDDED INTENSE TO VERY INTENSE CONVECTION LAY OVER WESTCENTRAL EASTCENTRAL & SOUTHEAST ARABIAN SEA AND COMORIN AREA. SCATTERED LOW AND MEDIUM CLOUDS WITH EMBEDDED WEAK TO MODERATE CONVECTION LAY OVER NORTHWEST ARABIAN SEA.

**PROBABILITY OF CYCLOGENESIS (FORMATION OF DEPRESSION) DURING NEXT 120 HRS:**

24 HOURS	24-48 HOURS	48-72 HOURS	72-96 HOURS	96-120 HOURS
NIL	NIL	NIL	NIL	NIL

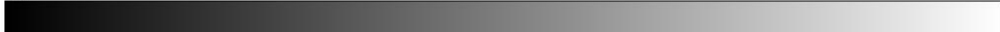
**REMARKS:** NIL



40°E 50°E 60°E 70°E 80°E 90°E 100°E 110°E

398

931



IMD, DELHI